

WINDSPORT®



FRENCH BLUE **HD-MAX**



SPANISH GOLD **HD-MAX**



PARIS NIGHT PARTIAL PAINT



SEVILLE PARTIAL PAINT

CAROLINA CHERRY



IRISH MAPLE



FLOORING

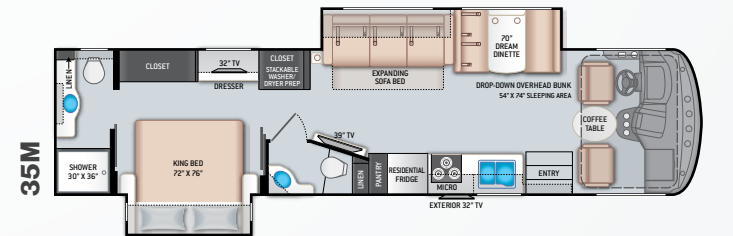
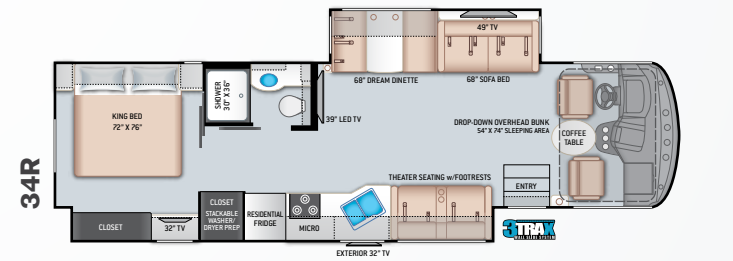
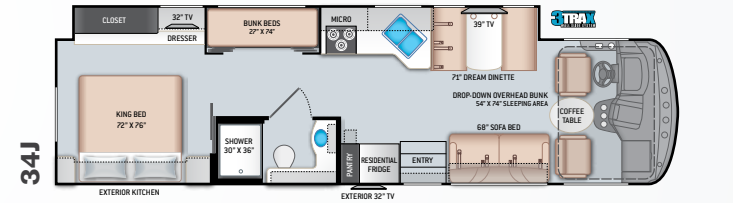
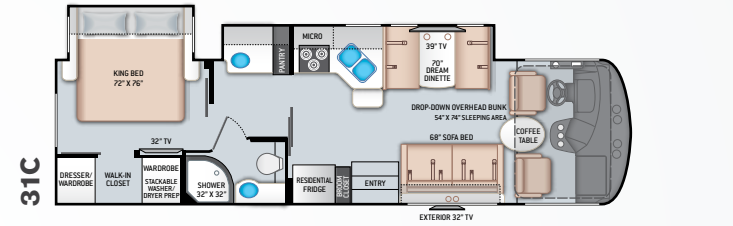
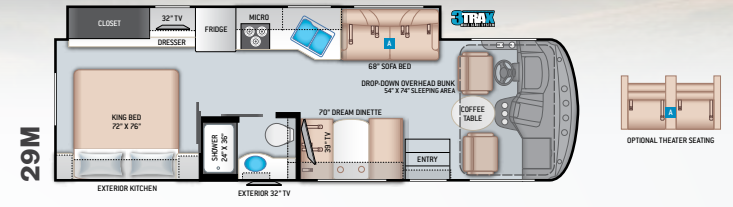


LUXURY COLLECTION

COASTLINE GREY



FLOORING



Featured Highlights

CONSTRUCTION & EXTERIOR

- Ford® F-53 Chassis - 6.8L Triton® V10 Engine, 320HP, 460 lb.-ft. Torque - TorqShift® 6-Speed Automatic Transmission with Overdrive
- Ford® F-53 Chassis - 7.3L Triton® V8 Engine, 350HP, 468 lb.-ft. Torque - TorqShift® 6-Speed Automatic Transmission with Overdrive*
- One-Piece Fiberglass Front & Rear Caps
- One-Piece Windshield
- HD-MAX® Exterior with Graphics Package
- Rotocast Storage Compartments
- Side-Hinged Flush Mount Radius Compartment Doors
- Premium One-Piece TPO Roof
- Automatic Leveling Jacks with Touchpad Controls
- Legless Lateral Power Patio Awning with Integrated LED Lighting
- Power Entry Door Awning (34R)
- 3TRAX® Wall Slide System (29M, 34J & 34R)
- Slideout Room Topper Awning(s)
- Pet-Link™ Multi-Purpose Tie-Down
- Electric Entry Step
- Basement Pass-Through Storage
- Roof Ladder
- Frameless Windows
- 8,000-lb. Trailer Hitch with 7-pin Round Connector

CONSTRUCTION & EXTERIOR OPTIONS

- HD-MAX® Exterior with Graphics Package and Partial Paint
- Frameless Dual Pane Windows

AUTOMOTIVE & COCKPIT

- 10" Touchscreen Dash Radio with Bluetooth® & SiriusXM® Radio
- Steering Wheel Audio Control**

- Back-Up Monitor
- Heated/Remote Exterior Mirrors with Integrated Side View Cameras
- Reclining/Swivel Leatherette Captain's Chairs with Stow-Away Coffee Table
- Power Driver's Seat
- Emergency Engine Start Switch
- Generator Start Switch
- Cruise Control
- Tilt Steering Wheel
- Tilt and Telescoping Steering Wheel*
- Automatic Headlights*
- Dash Fans
- Map Lights
- Fog Lights
- Conversation Mirrors in Front Overhead Cabinets
- Bird's Eye™ View Window
- Power Privacy Shade & Sunvisor at Windshield
- Privacy Curtain on Side Windows
- Dash Workstation with 110-volt & 12-volt Outlets
- 19.5" Tires with Stainless Steel Wheel Liners (29M)
- Valve Stem Extenders on Rear Wheels
- Power Drop-Down Hide-Away Overhead Bunk with Cotton Cloud™ Mattress & Bunk Ladder
- Electric Fireplace with Remote Control

AUTOMOTIVE & COCKPIT OPTIONS

- Required 22.5" Tires with Polished Aluminum Wheels (N/A 29M)

INTERIOR

- Rubber Tread Entry Steps with Lighted Step Well
- Residential Vinyl Flooring
- 84" Interior Ceiling Height

- LED Lighting
- Ceiling Ducted Air Conditioning System
- Flat Panel Cabinet Doors with Black Nickel Finish Hardware & Glass Inserts on Select Doors
- Dream Dinette® Booth with Cup Holders
- Dinette Storage Drawer (N/A 29M)
- Leatherette Sofa Bed
- Leatherette Theater Seats with Integrated Footrests (34R)
- Window Privacy Shades
- Electric Fireplace with Remote Control (35M)

INTERIOR OPTIONS

- Single Child Safety Tether in Dinette
- Leatherette T heater Seats with Integrated Footrests (29M)
- Luxury Collection Interior Décor and Cabinet Package

KITCHEN

- Double Door Refrigerator (29M)
- Residential Refrigerator (31C, 34J, 34R & 35M)
- 3-Burner Gas Cooktop/Oven with Bi-Fold Glass Cover
- 30" Over-the-Range Microwave Oven
- Decorative Glass & Tile Backsplash
- Solid Surface Countertops & Pressed Laminate Dinette Countertop
- Large Double Stainless Steel Bowl Sink with Single Handle Faucet & Pull-Down Sprayer
- Pantry (31C, 34J & 35M)
- 12-volt Attic Fan with Cover
- Exterior Kitchen with Refrigerator & Sink (29M & 34J)
- Kitchen Countertop LED Accent Lighting**

BEDROOM & BATHROOM

- Serta® King Size Bed

- Designer Headboard, Bedspread & Pillow Shams
- Bunk Beds in Hallway Slideout (34J)
- Foot Flush Porcelain Toilet
- Shower with Glass Door
- 110-volt Outlet on Inverter for CPAP Machine

BEDROOM & BATHROOM OPTIONS

- 12-volt Attic Fan with Cover in Bedroom (29M - N/A when Dual 13,500 BTU Roof Air Conditioners is Optioned)

ENTERTAINMENT

- 49" TV in Living Area (34R)
- 39" TV in Living Area
- 32" TV in Bedroom
- Blu-Ray Player in Living Area
- TV Prep in Bunk Beds (34J)
- Tablet Holder and USB Charge Ports in Bunk Beds (34J)**
- Exterior 32" TV on Manual Swivel with Bluetooth® Soundbar
- USB Charging Ports - Bedroom & Living Area
- Speakers in Sofa Overhead
- HDMI Video Distribution
- Cable TV Ready
- Digital TV Antenna
- Winegard® ConnetCT™ 2.0 WiFi / 4G / TV Antenna

ELECTRICAL & PLUMBING

- Onan® RV QG 4000 Gas Generator & 30-amp Detachable Shoreline Power Cord with 15,000 BTU Front Roof Air Conditioner (29M)
- Onan® RV QG 5500 Gas Generator & 50-amp Detachable Shoreline Power Cord, with Dual 13,500 BTU Roof Air Conditioners (34J, 34R & 35M)
- Solar Prep - Includes Solar Controller

- Exterior LP Connection
- Second Auxiliary House Battery
- Battery Tray that Holds up to (4) Four Batteries (34J, 34R & 35M)
- 1000-watt Inverter (29M)
- 1800-watt Inverter (31C, 34J, 34R & 35M)
- Automatic Generator Start
- Battery Disconnect Switch
- Rapid Camp+® Multiplex Wiring Control System with 7" Touchscreen
- Water Heater
- Water Heater Bypass System
- Enclosed & Heated Holding Tanks (34J, 34R & 35M)
- Enclosed Holding Tanks with Heat Pads (29M)
- 360° Siphon® RV Holding Tank Vent Cap
- Black Tank Flush System
- 1" Fresh Water Tank Drain
- Stackable Washer/Dryer Prep (31C, 34R, & 35M)
- Combo Washer/Dryer Prep (31C)
- Outside Shower
- Systems Control Center

ELECTRICAL & PLUMBING OPTIONS

- Onan® RV QG 5500 Gas Generator & 50-amp Detachable Shoreline Power Cord, with Dual 13,500 BTU Roof Air Conditioners (29M)
- 100 Watt Solar Charging System with Solar Controller

- * Late Availability
- ** Available in units built after 10/15/2020

For a complete listing of available features, thormotorcoach.com/windSPORT.

	29M	31C	34J	34R	35M
Chassis	Ford	Ford	Ford	Ford	Ford
Gross Vehicle (GVWR)	18,000	22,000	22,000	22,000	22,000
Gross Combined (GCWR)	23,000	26,000	26,000	26,000	26,000
Wheel Base	190"	228"	242"	242"	242"
Exterior Length (w/o ladder)	30'-9"	32'-10"	35'-8"	36'	36'-9"
Exterior Height (w/AC)	12'-2"	12'-6"	12'-6"	12'-4"	12'-4"
Exterior Width (w/o mirrors)	99"	99"	99"	99"	99"
Interior Height (living area)	84"	84"	84"	84"	84"
Awning Size	18'	18'	18'	18'	18'
Fuel (gal)	80	80	80	80	80
LPG (lbs)	88	88	88	88	88
Fresh/Waste/Gray Water (gal)	50 / 40 / 40	50 / 40 / 40	50 / 40 / 40	50 / 40 / 40	50 / 40F - 39R / 40F - 39R
Furnace (BTUs)	35,000	35,000	35,000	35,000	35,000
Exterior Storage Capacity (cu. ft.)	64	127	104	125	112
Hitch Weight Rating (lbs)	8,000	8,000	8,000	8,000	8,000



IMPORTANT—PLEASE READ: This brochure reflects product design, fabrication, material, components and specifications at the date of printing, which date is disclosed below. Please visit us online at ThorMotorCoach.com or consult with your selling dealership for the latest in standards, options, specification and technical information. Photographs in the brochure may depict optional equipment or may only be available in certain floor plans. Components, appliances and the chassis may have been manufactured in a calendar year before the vehicle's designated model year. All capacities are approximate. The actual length of the vehicle may differ from that indicated in the brochure due to variances in the manufacturing processes and/or installed components. All dry weights are based on standard model features and do not include optional features or equipment. Component part and appliance manufacturers issue limited warranties covering portions of the vehicle not covered under the limited warranty we issue. Copyright Thor Motor Coach, Inc. © OH 11/20/2020

Made to fit.

P.O. Box 1486, Elkhart, IN 46515 Sales Department: 800.860.5658

thormotorcoach.com/windSPORT

